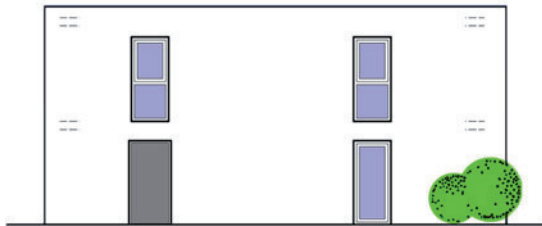
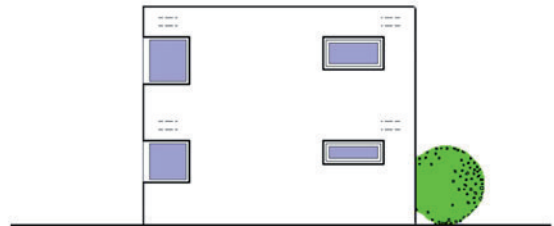




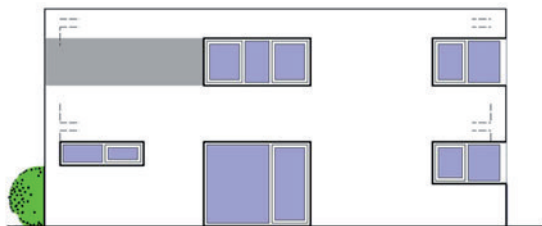
# FamilienHaus 206



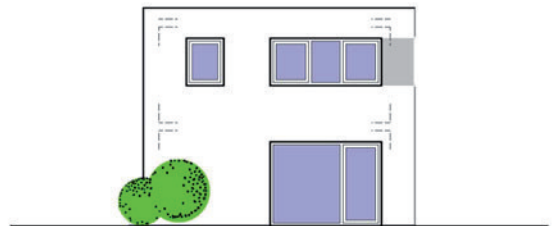
Ansicht Nord



Ansicht Ost



Ansicht Süd



Ansicht West



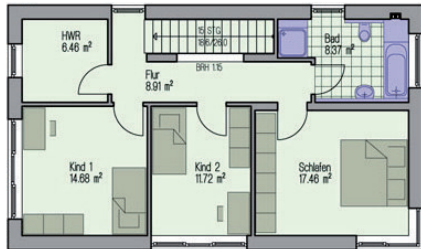
[www.fensterle.de](http://www.fensterle.de)

130 JAHRE BAU

Fensterle Bauunternehmen GmbH · Schwarzachstraße 14 · 88521 Ertingen · Fon 07371 95 00-0 · Fax 07371 95 00-29 · [info@fensterle.de](mailto:info@fensterle.de)



# FamilienHaus 206



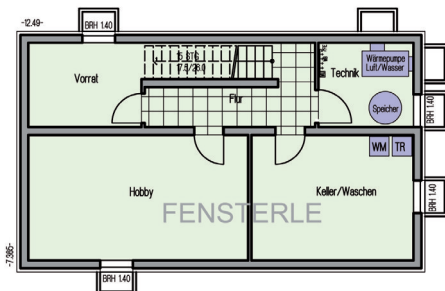
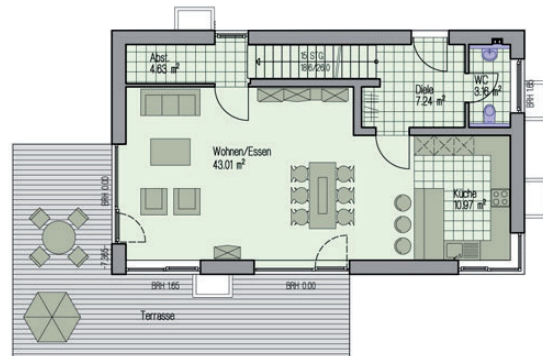
## Obergeschoss

Flur	8,66 m <sup>2</sup>
HWR	6,27 m <sup>2</sup>
Kind 1	14,24 m <sup>2</sup>
Kind 2	11,37 m <sup>2</sup>
Schlafen	16,93 m <sup>2</sup>
Bad	8,12 m <sup>2</sup>
<hr/>	
Gesamt (DIN)	65,59 m <sup>2</sup>

## Erdgeschoss

Diele	7,02 m <sup>2</sup>
WC	3,07 m <sup>2</sup>
Küche	10,64 m <sup>2</sup>
Wohnen/Essen	41,72 m <sup>2</sup>
Abstellraum	4,49 m <sup>2</sup>
<hr/>	
Gesamt (DIN)	69,01 m <sup>2</sup>

DIN-Wohnfläche EG und DG 134,60 m<sup>2</sup>



## Untergeschoss

Flur	8,13 m <sup>2</sup>
Technik	7,51 m <sup>2</sup>
Keller/Waschraum	19,07 m <sup>2</sup>
Hobbykeller	25,82 m <sup>2</sup>
Vorratsraum	8,94 m <sup>2</sup>
<hr/>	
Gesamt (DIN)	69,47 m <sup>2</sup>